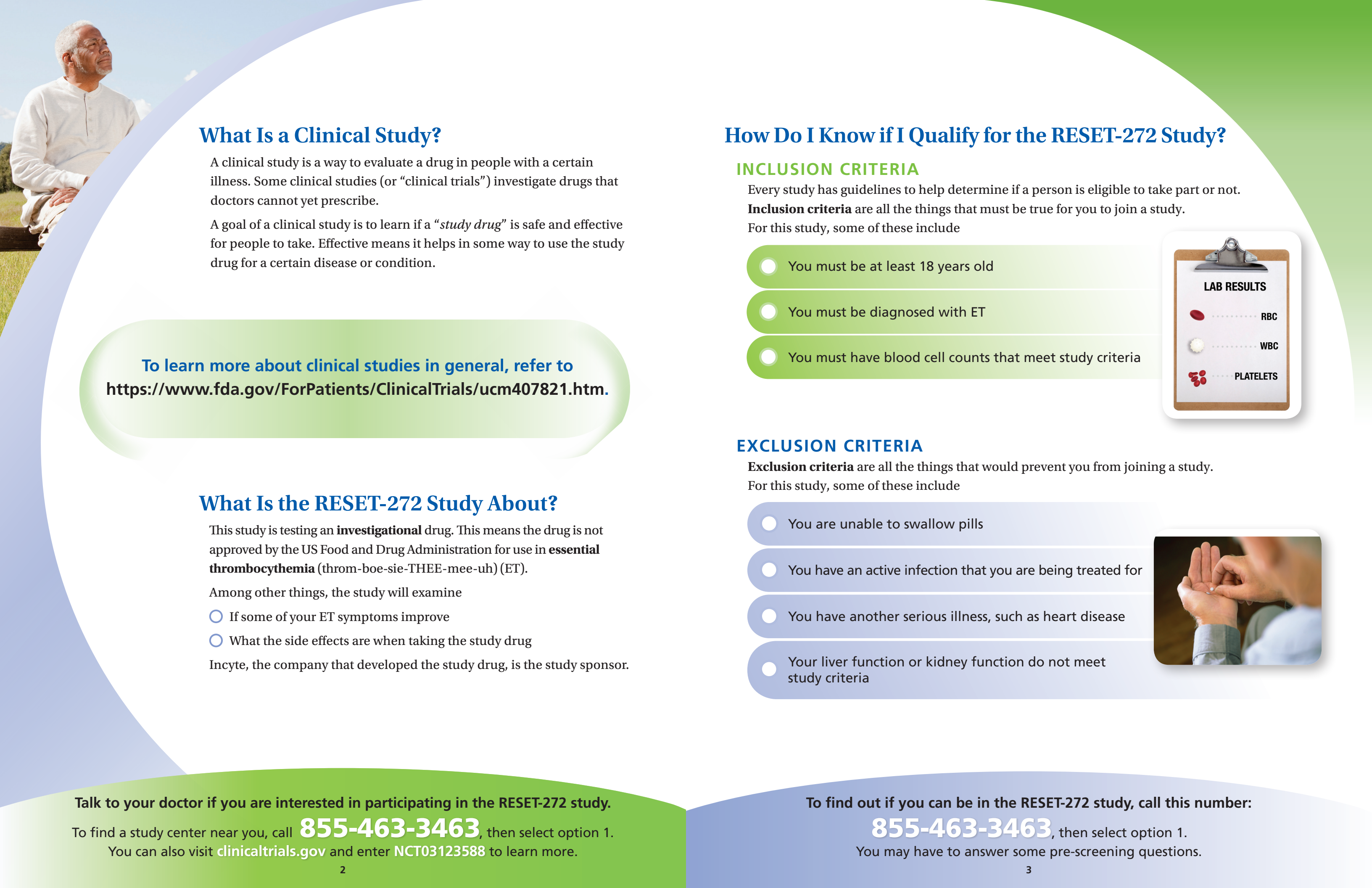


Do you have essential thrombocythemia?



Learn more about the
RESET-272 clinical study.





What Is a Clinical Study?

A clinical study is a way to evaluate a drug in people with a certain illness. Some clinical studies (or “clinical trials”) investigate drugs that doctors cannot yet prescribe.

A goal of a clinical study is to learn if a “*study drug*” is safe and effective for people to take. Effective means it helps in some way to use the study drug for a certain disease or condition.

To learn more about clinical studies in general, refer to <https://www.fda.gov/ForPatients/ClinicalTrials/ucm407821.htm>.

What Is the RESET-272 Study About?

This study is testing an **investigational** drug. This means the drug is not approved by the US Food and Drug Administration for use in **essential thrombocythemia** (throm-boe-sie-THEE-mee-uh) (ET).

Among other things, the study will examine

- ☐ If some of your ET symptoms improve
- ☐ What the side effects are when taking the study drug

Incyte, the company that developed the study drug, is the study sponsor.

How Do I Know if I Qualify for the RESET-272 Study?

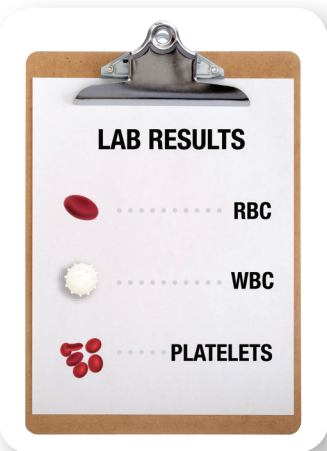
INCLUSION CRITERIA

Every study has guidelines to help determine if a person is eligible to take part or not.

Inclusion criteria are all the things that must be true for you to join a study.

For this study, some of these include

- ☐ You must be at least 18 years old
- ☐ You must be diagnosed with ET
- ☐ You must have blood cell counts that meet study criteria



EXCLUSION CRITERIA

Exclusion criteria are all the things that would prevent you from joining a study.

For this study, some of these include

- ☐ You are unable to swallow pills
- ☐ You have an active infection that you are being treated for
- ☐ You have another serious illness, such as heart disease
- ☐ Your liver function or kidney function do not meet study criteria



Talk to your doctor if you are interested in participating in the RESET-272 study.

To find a study center near you, call **855-463-3463**, then select option 1.
You can also visit clinicaltrials.gov and enter NCT03123588 to learn more.

To find out if you can be in the RESET-272 study, call this number:

855-463-3463, then select option 1.

You may have to answer some pre-screening questions.

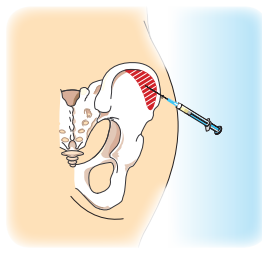


What Else Would I Need to Do if I Want to Join the RESET-272 Study?

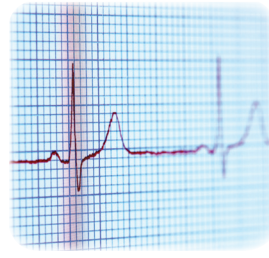
You will need to get a complete physical exam to see if you are eligible for the study. During that screening, you may need to



Give blood and urine samples



Have a bone marrow biopsy if you have not had one before



Have an electrocardiogram, a test that checks the condition of your heart

How Long Will I Be in the RESET-272 Study?

You may be in the study for approximately 24 to 36 months.

What Will Be Expected of Me During the RESET-272 Study?

- ☐ You will need to take all study-related drugs as instructed
- ☐ You will need to have regular visits with the study team
- ☐ You will have routine lab visits for blood work or other tests
- ☐ You will need to have a bone marrow biopsy at weeks 32 and 52 while participating in the study

What Costs May Be Covered During the RESET-272 Study?

The study drugs will be provided at no cost to you. The study team may help you check with your health plan and your doctor about any costs related to the study. Your routine medical care will be billed to you or your insurer in the ordinary manner. You will not be paid for being in the study.

You should learn before joining this study

- ☐ Which part of the research-related care will be free
- ☐ Which costs your insurer will pay; which costs you will have to pay
- ☐ If you will be reimbursed for travel costs up to a certain amount per visit

Are There Benefits and Risks to Being in a Clinical Study?

Your current doctor is the best person to help you understand the possible benefits and risks of joining a study.

Below are 2 websites that can help you start a conversation

- ☐ <https://www.nhlbi.nih.gov/studies/clinicaltrials/benefitsrisks>
- ☐ <https://www.nih.gov/health-information/nih-clinical-research-trials-you/basics>



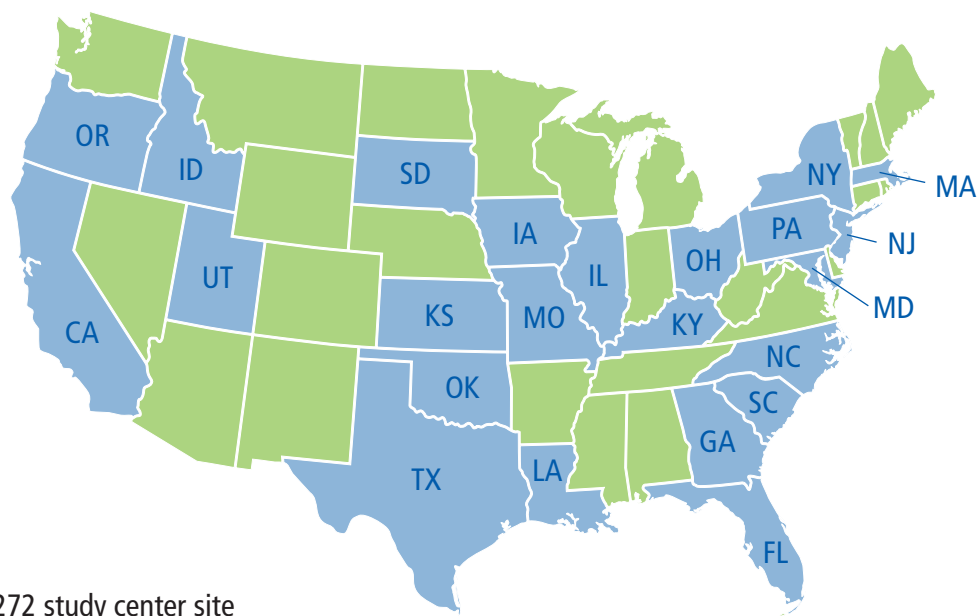
Talk to your doctor if you are interested in participating in the RESET-272 study.

To find a study center near you, call **855-463-3463**, then select option 1. You can also visit clinicaltrials.gov and enter NCT03123588 to learn more.

To find out if you can be in the RESET-272 study, call this number:

855-463-3463, then select option 1.

You may have to answer some pre-screening questions.



- RESET-272 study center site
- Non-study center site

RESET-272 Study Center Sites

■ Long Beach, CA	■ Boise, ID	■ Baltimore, MD	■ Cleveland, OH
■ Los Angeles, CA	■ Naperville, IL	■ St Louis, MO	■ Oklahoma City, OK
■ Oxnard, CA	■ Niles, IL	■ Morristown, NJ	■ Portland, OR
■ Redlands, CA	■ Skokie, IL	■ Bronx, NY	■ Danville, PA
■ Riverside, CA	■ Springfield, IL	■ Brooklyn, NY	■ Greenville, SC
■ Whittier, CA	■ Tinley Park, IL	■ East Setauket, NY	■ Rock Hill, SC
■ Orange City, FL	■ Westwood, KS	■ New York, NY	■ Watertown, SD
■ Plantation, FL	■ Danville, KY	■ Cary, NC	■ Dallas, TX
■ Winter Haven, FL	■ Lexington, KY	■ Durham, NC	■ Houston, TX
■ Tifton, GA	■ Lake Charles, LA	■ Greenville, NC	■ The Woodlands, TX
■ Ames, IA	■ Boston, MA	■ Canton, OH	■ Salt Lake City, UT

Is There a RESET-272 Study Center Near Me?

Review the map to find the study center nearest to you. To get the address and phone number of a study center, call the number below. You can also visit clinicaltrials.gov and enter **NCT03123588** to learn more.

To learn more about the RESET-272 study, call
855-463-3463, then select option 1.

You can also visit clinicaltrials.gov and enter **NCT03123588** to learn more.